

EVERGREEN PLAZA

Evergreen Park, IL



MID-AMERICA[®]
Asset Management, Inc.

1,200 - 6,000 SF
AVAILABLE NOW



RETAIL OPPORTUNITY

EVERGREEN PLAZA



Address

SWC 95th St & Western,
Evergreen Park, IL 60805

Availability

1,200 - 6,000 SF

Features

- Dominant power center serving the regional trade area of Evergreen Park, Oak Lawn, and Beverly
- Densely populated with over 200,000 within 3 miles
- Located at the heavily traveled intersection of 95th & Western
- 28,200 VPD on Western Ave and 28,900 VPD on 95th Street

Co-Tenants



DESIGNER SHOE WAREHOUSE



Demographics

	1 Mile	3 Miles	5 Miles
POPULATION	18,957	207,130	580,880
HOUSEHOLDS	6,722	74,782	197,736
AVG HOUSEHOLD INCOME	\$101,976	\$90,974	\$72,977
DAYTIME POPULATION	19,100	182,200	508,285

EVERGREEN PLAZA



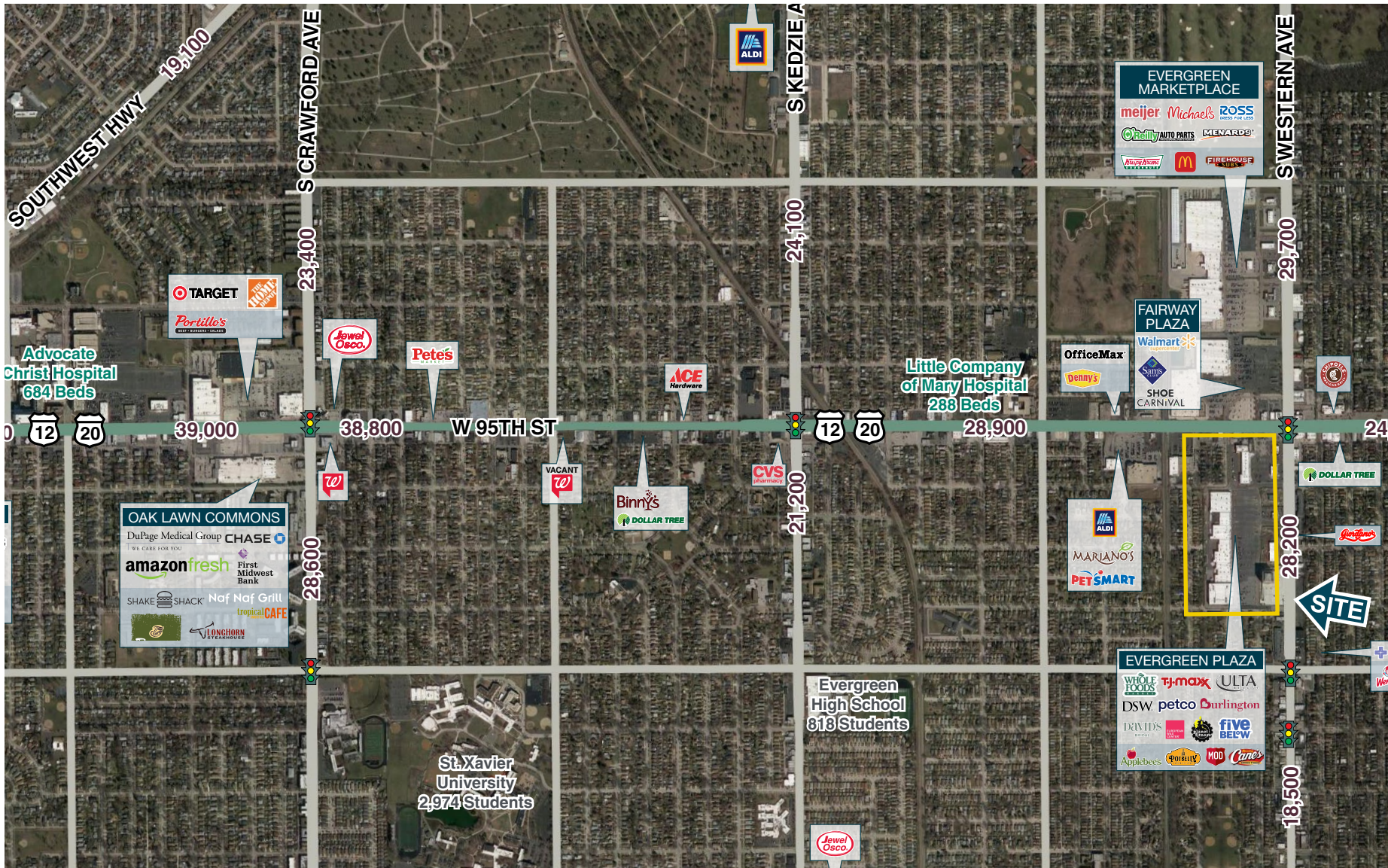
Suite	Tenant	SF
1	DSW Shoes	16,200
2	Five Below	8,282
3	Petco	12,729
4	TJ Maxx	21,000
5	Ulta	10,500
6	Available	6,000
7	Whole Foods	30,000
8	Bath & Body Works	3,450

Suite	Tenant	SF
9	Zemsky's	5,268
10	Sketchers	7,000
11	Burlington	45,058
12	Available	4,300
13	David's Bridal	10,200
14	Classy Nails and Spa	3,500
15	European Wax Center	1,565
16	Xfinity	2,500
17	Humana	5,000

Suite	Tenant	SF
18	Snipes	6,000
19	Available	1,200
20	Available	5,500
21	Planet Fitness	27,326
22	MOD Pizza	2,590
23	T-Mobile	2,531
24	Potbelly	2,434
25	Verizon	2,400
26	Starbucks	2,400

Suite	Tenant	SF
27	Visionworks	2,400
28	The Juicy Crab	3,253
29	America's Dog & Burger	2,000
30	Red Snappers	2,012
31	Available	1,200
32	Available	1,950
33	Bank of America	1,600
34	Kay Jewelers	2,000

EVERGREEN PLAZA



EVERGREEN PLAZA



Sarah
Norlander

T: 630.954.7290

F: 630.954.7304

SNorlander@MidAmericaGrp.com

Marget
Graham

T: 630.954.7307

F: 630.954.7304

MGraham@MidAmericaGrp.com

Kate
Ruzevich

T: 630.481.4015

F: 630.954.7304

KRuzevich@MidAmericaGrp.com



One Parkview Plaza, 9th Floor
Oakbrook Terrace, Illinois 60181
630.954.7300

MidAmericaGrp.com